



INTEROFFICE MEMO

Gary Grief, Executive Director

LaDonna Castañuela, Charitable Bingo Operations Director

To: Robert G. Rivera, Chairman
Cindy Fields, Commissioner
Mark A. Franz, Commissioner
Erik C. Saenz, Commissioner
Jamey Steen, Commissioner

From: Kelly Stuckey, Controller 

Date: May 31, 2022

Re: Lottery sales and revenue, game performance, new game opportunities, advertising, promotional activities, market research, trends, and game contracts, agreements, and procedures

The attached detailed weekly sales summary for the week ending May 21, 2022 is for your information. Summary sales performance memos and the detailed weekly sales summary for the week ending June 4, 2022 will be provided to you at the June 9, 2022 Commission meeting.

Please feel free to contact me at 512-344-5426 if you need additional information or have any questions.



Texas Lottery Commission
Calculation of Revenue from Sales and Net Revenue to State
with Year over Year Analysis
Week ending May 22, 2021 and May 21, 2022

"Sales Contribution"

	5/22/2021		5/21/2022	
Sales	\$ 5,912,051,778		\$ 5,913,963,815	
Less: <u>Prize Expense</u>	(3,993,155,233)		(4,041,955,617)	
= Sales Contribution	<u>1,918,896,544</u>	32.46%	<u>1,872,008,198</u>	31.65%
Less: Retailer Commission (5%)	(295,940,440)		(296,090,302)	
Less: Administration (IGT @ 2.0773%)	(122,811,052)		(122,850,770)	
Statutory Administration Appropriation	(127,535,286)		(140,381,394)	
= Estimated Net Revenue to the State (FSF)	<u>\$ 1,372,609,766</u>	23.22%	<u>\$ 1,312,685,732</u>	22.20%
Prize Expense as a % of sales	67.5%		68.3%	

Total may not sum due to rounding



WEEKLY SALES SUMMARY

Unaudited

Week Ending: 5/21/2022

Texas Lottery Commission
Fiscal Year to Date Sales Comparison
Unaudited

Through the Week Ending: 5/21/2022 (38 weeks)

Sales by Game	FY 2020*	FY 2021**	FY 2022	\$ Change		% Change	
				FY 2022 to FY 2020	FY 2022 to FY 2021 to	FY 2022 to FY 2020	FY 2022 to FY 2021 to
Scratch Tickets	\$ 3,874,118,050	\$ 4,774,777,448	\$ 4,865,955,645	\$ 991,837,595	\$ 91,178,197	25.6%	1.9%
Lotto Texas	76,915,726	98,304,868	89,772,829	12,857,103	-8,532,039	16.7%	-8.7%
Lotto Extra	20,443,827	28,871,143	28,439,964	7,996,137	-431,179	39.1%	-1.5%
Pick 3	181,316,169	206,307,942	197,817,136	16,500,967	-8,490,806	9.1%	-4.1%
Pick 3 Fireball	13,734,954	18,175,099	18,760,439	5,025,486	585,340	36.6%	3.2%
Cash Five	33,038,745	37,367,094	36,045,910	3,007,165	-1,321,184	9.1%	-3.5%
Texas Two Step	43,209,549	49,182,078	46,093,713	2,884,165	-3,088,365	6.7%	-6.3%
Mega Millions	144,844,962	267,848,029	150,577,356	5,732,394	-117,270,673	4.0%	-43.8%
Megaplier	24,560,193	44,871,312	27,803,594	3,243,401	-17,067,718	13.2%	-38.0%
MM Just the Jackpot	582,825	1,089,426	606,831	24,006	-482,595	4.1%	-44.3%
Daily 4	81,862,780	88,530,815	87,766,598	5,903,818	-764,217	7.2%	-0.9%
Daily 4 Fireball	11,415,134	14,395,673	16,615,920	5,200,786	2,220,247	45.6%	15.4%
Powerball	138,053,186	213,636,457	267,685,035	129,631,849	54,048,578	93.9%	25.3%
Power Play	23,680,289	36,933,376	47,980,134	24,299,845	11,046,758	102.6%	29.9%
All or Nothing	25,564,585	31,761,019	32,042,712	6,478,127	281,693	25.3%	0.9%
Total	\$ 4,693,340,973	\$ 5,912,051,778	\$ 5,913,963,815	\$ 1,220,622,843	\$ 1,912,038	26.0%	0.0%

* 3 extra days

**1 extra day

Texas Lottery Commission
Fiscal Year to Date Cumulative Average Sales Comparison
Unaudited

Through the Week Ending 5/21/2022

Sales by Game	FY 2020		FY 2021		FY 2022
Scratch Tickets	\$	14,564,354	\$	18,086,278	\$ 18,501,732
Lotto Texas		289,157		372,367	341,342
Lotto Extra		76,856		109,360	108,137
Pick 3		681,640		781,469	752,156
Pick 3 Fireball		51,635		68,845	71,332
Cash Five		124,206		141,542	137,057
Texas Two Step		162,442		186,296	175,261
Mega Millions		544,530		1,014,576	572,537
Megaplier		92,332		169,967	105,717
MM Just the Jackpot		2,191		4,127	2,307
Daily 4		307,755		335,344	333,713
Daily 4 Fireball		42,914		54,529	63,178
Powerball		518,997		809,229	1,017,814
Power Play		89,024		139,899	182,434
All or Nothing		96,107		120,307	121,835
Total	\$	17,644,139	\$	22,394,136	\$ 22,486,554

5/23/2020
266 days

5/22/2021
264 days

5/21/2022
263 days

Texas Lottery Commission
Fiscal Year Over Year Change in Sales
Unaudited
FY 2022 Compared to FY 2021

			SCRATCH TICKETS				DRAW GAMES				TOTAL SALES			
FY 2022			FY 2022	FY 2021	Difference	% change - Cumulative Sales	FY 2022	FY 2021	Difference	% change - Cumulative Sales	FY 2022	FY 2021	Difference	% change - Cumulative Sales
Week	Week	Ending												
1	9/4/2021*		\$73,465,895	\$88,381,162	(\$14,915,267)	-16.9%	\$19,754,024	\$22,327,441	(\$2,573,417)	-11.5%	\$93,219,919	\$110,708,603	(\$17,488,684)	-15.8%
2	9/11/2021		\$117,404,128	\$115,145,117	\$2,259,011	2.0%	\$30,567,724	\$25,865,986	\$4,701,738	18.2%	\$147,971,852	\$141,011,103	\$6,960,749	4.9%
3	9/18/2021		\$121,522,543	\$117,098,316	\$4,424,227	3.8%	\$34,044,343	\$25,689,861	\$8,354,482	32.5%	\$155,566,886	\$142,788,177	\$12,778,709	8.9%
4	9/25/2021		\$121,751,048	\$113,153,550	\$8,597,498	7.6%	\$33,618,247	\$24,320,273	\$9,297,974	38.2%	\$155,369,295	\$137,473,823	\$17,895,472	13.0%
5	10/2/2021		\$127,128,919	\$114,375,276	\$12,753,643	11.2%	\$41,420,853	\$23,460,330	\$17,960,523	76.6%	\$168,549,772	\$137,835,606	\$30,714,166	22.3%
6	10/9/2021		\$121,962,687	\$114,802,883	\$7,159,804	6.2%	\$31,994,174	\$21,716,732	\$10,277,442	47.3%	\$153,956,861	\$136,519,615	\$17,437,246	12.8%
7	10/16/2021		\$121,035,307	\$113,280,669	\$7,754,638	6.8%	\$23,150,459	\$20,664,725	\$2,485,734	12.0%	\$144,185,766	\$133,945,394	\$10,240,372	7.6%
8	10/23/2021		\$121,223,866	\$111,745,204	\$9,478,662	8.5%	\$23,980,968	\$21,165,208	\$2,815,761	13.3%	\$145,204,834	\$132,910,412	\$12,294,423	9.3%
9	10/30/2021		\$121,466,419	\$111,272,152	\$10,194,267	9.2%	\$22,663,805	\$22,136,334	\$527,471	2.4%	\$144,130,224	\$133,408,486	\$10,721,738	8.0%
10	11/6/2021		\$123,385,510	\$113,620,007	\$9,765,503	8.6%	\$23,377,828	\$22,606,708	\$771,120	3.4%	\$146,763,338	\$136,226,715	\$10,536,623	7.7%
11	11/13/2021		\$124,592,327	\$109,577,081	\$15,015,246	13.7%	\$23,964,090	\$22,749,434	\$1,214,656	5.3%	\$148,556,417	\$132,326,515	\$16,229,902	12.3%
12	11/20/2021		\$129,630,920	\$114,446,332	\$15,184,588	13.3%	\$24,189,686	\$23,397,417	\$792,269	3.4%	\$153,820,606	\$137,843,749	\$15,976,857	11.6%
13	11/27/2021		\$121,428,296	\$106,113,701	\$15,314,595	14.4%	\$24,228,401	\$23,890,237	\$338,164	1.4%	\$145,656,697	\$130,003,938	\$15,652,759	12.0%
14	12/4/2021		\$128,910,581	\$111,508,837	\$17,401,744	15.6%	\$26,157,280	\$26,132,516	\$24,764	0.1%	\$155,067,861	\$137,641,353	\$17,426,508	12.7%
15	12/11/2021		\$127,275,950	\$111,156,442	\$16,119,508	14.5%	\$27,055,024	\$26,432,394	\$622,630	2.4%	\$154,330,974	\$137,588,836	\$16,742,138	12.2%
16	12/18/2021		\$130,658,440	\$112,212,350	\$18,446,090	16.4%	\$28,123,755	\$27,895,989	\$227,766	0.8%	\$158,782,195	\$140,108,339	\$18,673,856	13.3%
17	12/25/2021		\$134,332,326	\$119,456,586	\$14,875,740	12.5%	\$30,887,402	\$30,653,848	\$233,554	0.8%	\$165,219,728	\$150,110,434	\$15,109,294	10.1%
18	1/1/2022		\$143,781,256	\$127,122,270	\$16,658,986	13.1%	\$46,057,933	\$38,528,413	\$7,529,520	19.5%	\$189,839,189	\$165,650,683	\$24,188,506	14.6%
19	1/8/2022		\$134,458,569	\$133,494,933	\$963,636	0.7%	\$47,708,392	\$57,484,861	(\$9,776,469)	-17.0%	\$182,166,961	\$190,979,794	(\$8,812,833)	-4.6%
20	1/15/2022		\$130,854,390	\$127,542,833	\$3,311,557	2.6%	\$26,705,000	\$87,788,743	(\$61,083,743)	-69.6%	\$157,559,390	\$215,331,576	(\$57,772,186)	-26.8%
21	1/22/2022		\$126,399,631	\$130,328,004	(\$3,928,373)	-3.0%	\$27,056,221	\$97,504,542	(\$70,448,321)	-72.3%	\$153,455,852	\$227,832,546	(\$74,376,694)	-32.6%
22	1/29/2022		\$127,324,026	\$130,076,595	(\$2,752,569)	-2.1%	\$27,834,789	\$24,692,518	\$3,142,272	12.7%	\$155,158,815	\$154,769,113	\$389,703	0.3%
23	2/5/2022		\$126,528,959	\$136,640,103	(\$10,111,144)	-7.4%	\$23,518,047	\$24,693,211	(\$1,175,164)	-4.8%	\$150,047,006	\$161,333,314	(\$11,286,308)	-7.0%
24	2/12/2022		\$132,565,722	\$124,939,795	\$7,625,927	6.1%	\$24,590,558	\$23,636,934	\$953,624	4.0%	\$157,156,280	\$148,576,729	\$8,579,551	5.8%
25	2/19/2022		\$132,003,180	\$75,402,427	\$56,600,753	75.1%	\$23,559,425	\$13,683,523	\$9,875,902	72.2%	\$155,562,605	\$89,085,950	\$66,476,655	74.6%
26	2/26/2022		\$130,903,763	\$126,573,041	\$4,330,722	3.4%	\$24,316,703	\$23,389,855	\$926,848	4.0%	\$155,220,466	\$149,962,896	\$5,257,570	3.5%
27	3/5/2022		\$144,124,385	\$133,200,697	\$10,923,688	8.2%	\$25,610,526	\$25,627,875	(\$17,349)	-0.1%	\$169,734,911	\$158,828,572	\$10,906,339	6.9%
28	3/12/2022		\$139,056,015	\$134,601,912	\$4,454,103	3.3%	\$23,673,582	\$26,650,604	(\$2,977,023)	-11.2%	\$162,729,597	\$161,252,516	\$1,477,081	0.9%
29	3/19/2022		\$136,794,720	\$153,635,044	(\$16,840,324)	-11.0%	\$23,344,648	\$27,014,869	(\$3,670,221)	-13.6%	\$160,139,368	\$180,649,913	(\$20,510,545)	-11.4%
30	3/26/2022		\$134,238,655	\$156,511,371	(\$22,272,716)	-14.2%	\$23,969,257	\$27,238,714	(\$3,269,458)	-12.0%	\$158,207,912	\$183,750,085	(\$25,542,174)	-13.9%
31	4/2/2022		\$138,671,383	\$158,758,180	(\$20,086,797)	-12.7%	\$24,997,410	\$25,817,113	(\$819,703)	-3.2%	\$163,668,793	\$184,575,293	(\$20,906,500)	-11.3%
32	4/9/2022		\$131,487,411	\$152,261,121	(\$20,773,710)	-13.6%	\$25,445,741	\$25,896,084	(\$450,343)	-1.7%	\$156,933,152	\$178,157,205	(\$21,224,053)	-11.9%
33	4/16/2022		\$132,169,684	\$149,946,632	(\$17,776,948)	-11.9%	\$26,316,966	\$26,330,496	(\$13,530)	-0.1%	\$158,486,650	\$176,277,128	(\$17,790,478)	-10.1%
34	4/23/2022		\$128,765,378	\$147,956,805	(\$19,191,427)	-13.0%	\$29,303,625	\$26,462,493	\$2,841,133	10.7%	\$158,069,003	\$174,419,298	(\$16,350,295)	-9.4%
35	4/30/2022		\$131,124,620	\$149,268,466	(\$18,143,846)	-12.2%	\$32,269,084	\$28,003,294	\$4,265,791	15.2%	\$163,393,704	\$177,271,760	(\$13,878,056)	-7.8%
36	5/7/2022		\$132,440,406	\$144,423,251	(\$11,982,845)	-8.3%	\$23,807,640	\$29,055,332	(\$5,247,692)	-18.1%	\$156,248,046	\$173,478,583	(\$17,230,537)	-9.9%
37	5/14/2022		\$126,717,376	\$143,355,893	(\$16,638,517)	-11.6%	\$23,986,338	\$31,496,103	(\$7,509,766)	-23.8%	\$150,703,714	\$174,851,996	(\$24,148,283)	-13.8%
38	5/21/2022		\$138,370,954	\$141,392,410	(\$3,021,456)	-2.1%	\$24,758,230	\$35,173,326	(\$10,415,096)	-29.6%	\$163,129,184	\$176,565,736	(\$13,436,552)	-7.6%
39	5/28/2022			\$137,051,585				\$25,478,731				\$162,530,316		
40	6/4/2022			\$138,140,582				\$25,330,096				\$163,470,678		
41	6/11/2022			\$131,984,128				\$21,831,386				\$153,815,514		
42	6/18/2022			\$129,880,069				\$21,982,398				\$151,862,467		

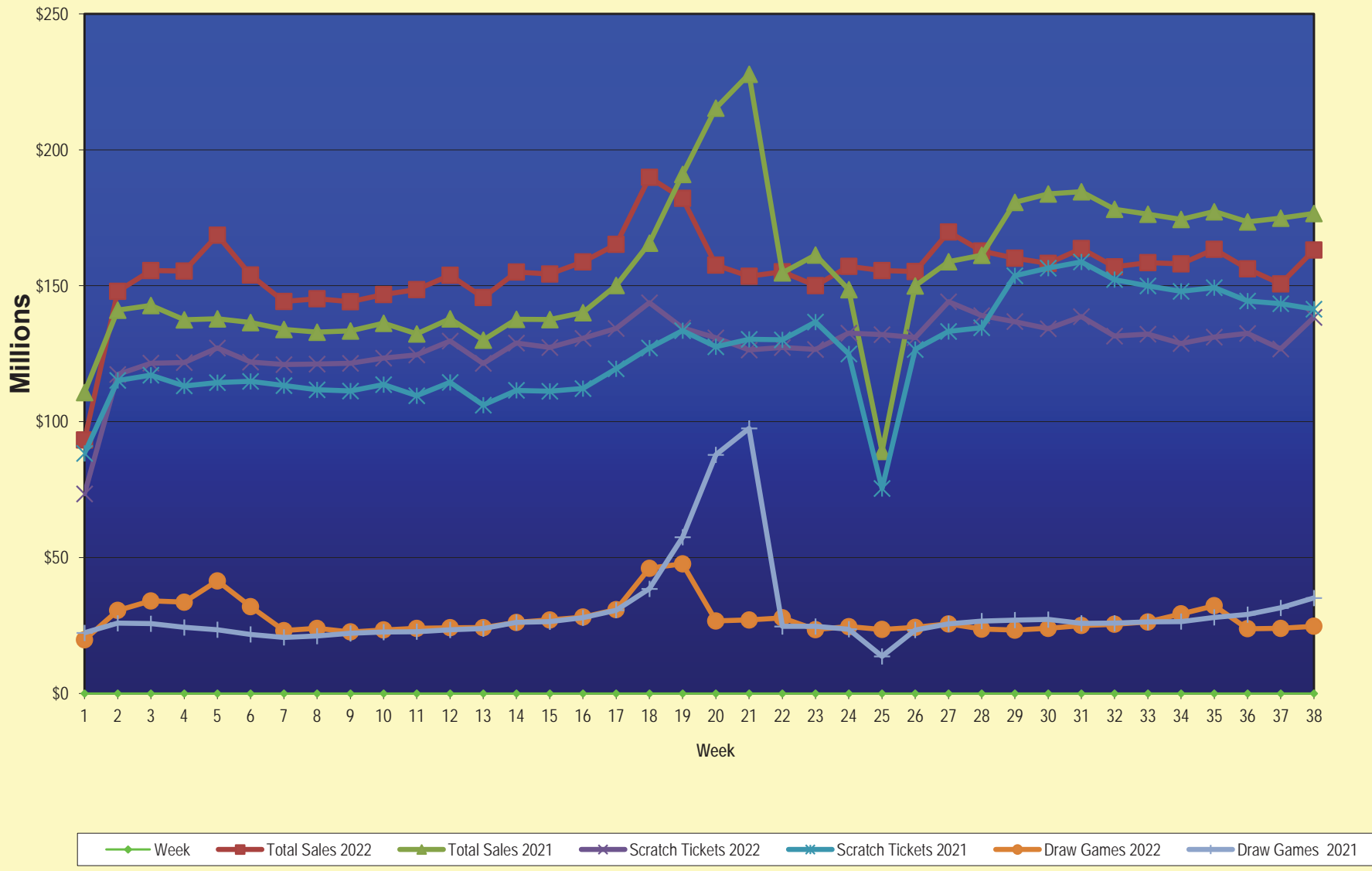
Texas Lottery Commission
Fiscal Year Over Year Change in Sales
Unaudited
FY 2022 Compared to FY 2021

			SCRATCH TICKETS				DRAW GAMES				TOTAL SALES			
FY 2022			FY 2022	FY 2021	Difference	% change - Cumulative Sales	FY 2022	FY 2021	Difference	% change - Cumulative Sales	FY 2022	FY 2021	Difference	% change - Cumulative Sales
Week	Week	Ending												
43	6/25/2022			\$128,432,805				\$22,386,397				\$150,819,202		
44	7/2/2022			\$134,775,705				\$23,967,723				\$158,743,428		
45	7/9/2022			\$127,718,775				\$23,105,336				\$150,824,111		
46	7/16/2022			\$127,681,286				\$23,671,929				\$151,353,215		
47	7/23/2022			\$124,610,457				\$24,186,190				\$148,796,647		
48	7/30/2022			\$126,437,509				\$25,623,636				\$152,061,145		
49	8/6/2022			\$125,100,277				\$25,280,445				\$150,380,722		
50	8/13/2022			\$121,350,965				\$25,593,011				\$146,943,976		
51	8/20/2022			\$121,080,932				\$25,800,409				\$146,881,341		
52	8/27/2022			\$118,866,934				\$28,610,926				\$147,477,860		
	8/31/2022**			\$49,085,562				\$10,105,437				\$59,190,999		
Total thru Current Week			\$4,865,955,645	\$4,774,777,448	\$91,178,197	1.9%	\$1,048,008,170	\$1,137,274,330	(\$89,266,160)	-7.8%	\$5,913,963,815	\$5,912,051,778	\$1,912,038	0.0%
Fiscal Year Total			\$4,865,955,645	\$6,616,975,019			\$1,048,008,170	\$1,490,228,375			\$5,913,963,815	\$8,107,203,394		

* FY 22 includes 4 days; FY 21 includes 5 days

** FY 22 includes 4 days; FY 21 includes 3 days

Texas Lottery Commission Fiscal Year Over Year Change in Sales



Note: Report is prepared on a Fiscal Year basis.

Texas Lottery Commission
Scratch Tickets by Price Point
Sales, Prize Expense, Sales Contribution and Payout Percentage With Year Over Year Changes
Unaudited

Fiscal Year	Price Point	# of Active Games	FY Sales	% of Scratch Ticket Sales	Year over Year Change in Sales	FY Prize Expense	Year over Year Change in Prize Expense	FY Sales Contribution	Year over Year Change in Contribution	Average Prize Payout %	Year over Year Difference in Payout %
2021	\$1.00	19	95,793,421	2.0%		57,522,581		38,270,840		60.0%	-0.2%
Through	\$2.00	25	232,157,442	4.9%		151,195,083		80,962,359		65.1%	0.0%
5/22/2021	\$3.00	8	185,929,965	3.9%		122,724,491		63,205,474		66.0%	0.1%
	\$5.00	52	1,002,151,130	21.0%		681,631,720		320,519,410		68.0%	0.0%
	\$10.00	29	1,221,999,170	25.6%		855,943,133		366,056,037		70.0%	-0.3%
	\$20.00	14	948,040,300	19.9%		711,951,537		236,088,763		75.1%	0.1%
	\$30.00	4	282,582,870	5.9%		212,103,098		70,479,773		75.1%	0.1%
	\$50.00	9	806,123,150	16.9%		628,728,423		177,394,727		78.0%	0.0%
	\$100.00	0	0	0.0%		0		0		0.0%	0.0%
Total		160	\$4,774,777,448			\$3,421,800,064		\$1,352,977,384		71.7%	0.8%
2022	\$1.00	13	71,863,325	1.5%		43,386,811		28,476,514		60.4%	0.3%
Through	\$2.00	24	181,596,258	3.7%		118,086,266		63,509,992		65.0%	-0.1%
5/21/2022	\$3.00	9	172,716,447	3.5%		113,941,840		58,774,607		66.0%	0.0%
	\$5.00	47	960,553,735	19.7%		653,551,094		307,002,641		68.0%	0.0%
	\$10.00	25	1,172,134,510	24.1%		820,971,099		351,163,411		70.0%	0.0%
	\$20.00	16	1,072,117,760	22.0%		804,432,677		267,685,083		75.0%	-0.1%
	\$30.00	4	296,190,210	6.1%		222,406,329		73,783,881		75.1%	0.0%
	\$50.00	9	920,451,100	18.9%		718,104,483		202,346,617		78.0%	0.0%
	\$100.00	1	18,332,300	0.4%		14,644,253		3,688,047		79.9%	79.9%
Total		148	\$4,865,955,645			\$3,509,524,853		\$1,356,430,792		72.1%	0.5%
Variance	\$1.00	-6	-23,930,096		-25.0%	-14,135,770	-24.6%	-9,794,326	-25.6%	0.33%	
2022 to	\$2.00	-1	-50,561,184		-21.8%	-33,108,817	-21.9%	-17,452,367	-21.6%	-0.10%	
2021	\$3.00	1	-13,213,518		-7.1%	-8,782,650	-7.2%	-4,430,868	-7.0%	-0.04%	
	\$5.00	-5	-41,597,395		-4.2%	-28,080,626	-4.1%	-13,516,769	-4.2%	0.02%	
	\$10.00	-4	-49,864,660		-4.1%	-34,972,034	-4.1%	-14,892,626	-4.1%	0.00%	
	\$20.00	2	124,077,460		13.1%	92,481,141	13.0%	31,596,319	13.4%	-0.07%	
	\$30.00	0	13,607,340		4.8%	10,303,232	4.9%	3,304,108	4.7%	0.03%	
	\$50.00	0	114,327,950		14.2%	89,376,060	14.2%	24,951,890	14.1%	0.02%	
	\$100.00	1	18,332,300		0.0%	14,644,253	0.0%	3,688,047	0.0%	79.9%	
Total		-12	\$91,178,197		1.9%	\$87,724,789	2.6%	\$3,453,408	0.3%	0.46%	

Notes - Scratch Ticket Variances

Texas Lottery Commission
Scratch Tickets by Price Point
Sales, Prize Expense, Sales Contribution and Payout Percentage With Year Over Year Changes
Unaudited

			FY 2022			FY 2021		Difference
Sales	\$1 - \$5		\$1,386,729,765			\$1,516,031,958		-\$129,302,193
Prize Exp.	\$1 - \$5		\$928,966,012			\$1,013,073,875		-\$84,107,863
Sales Cont.	\$1 - \$5		\$457,763,753			\$502,958,083		-\$45,194,330
Prize Exp. %	\$1 - \$5		67.0%			66.8%		0.2%
			FY 2022			FY 2021		Difference
Sales	\$10 - \$100		\$3,479,225,880			\$3,258,745,490		\$220,480,390
Prize Exp.	\$10 - \$100		\$2,580,558,841			\$2,408,726,189		\$171,832,652
Sales Cont.	\$10 - \$100		\$898,667,039			\$850,019,301		\$48,647,738
Prize Exp. %	\$10 - \$100		74.2%			73.9%		0.3%
			FY 2022			FY 2021		Difference
Sales	Scratch		\$4,865,955,645			\$4,774,777,448		\$91,178,197
Prize Exp.	Scratch		\$3,509,524,853			\$3,421,800,064		\$87,724,789
Sales Cont.	Scratch		\$1,356,430,792			\$1,352,977,384		\$3,453,408
Prize Exp. %	Scratch		72.1%			71.7%		0.5%

			FY 2022			FY 2021		Difference
Sales	\$1 - \$10		\$2,558,864,275			\$2,738,031,128		-\$179,166,853
Prize Exp.	\$1 - \$10		\$1,749,937,111			\$1,869,017,007		-\$119,079,897
Sales Cont.	\$1 - \$10		\$808,927,164			\$869,014,121		-\$60,086,956
Prize Exp. %	\$1 - \$10		68.4%			68.3%		0.1%
			FY 2022			FY 2021		Difference
Sales	\$20 - \$100		\$2,307,091,370			\$2,036,746,320		\$270,345,050
Prize Exp.	\$20 - \$100		\$1,759,587,742			\$1,552,783,057		\$206,804,685
Sales Cont.	\$20 - \$100		\$547,503,628			\$483,963,263		\$63,540,365
Prize Exp. %	\$20 - \$100		76.3%			76.2%		0.0%
			FY 2022			FY 2021		Difference
Sales	Scratch		\$4,865,955,645			\$4,774,777,448		\$91,178,197
Prize Exp.	Scratch		\$3,509,524,853			\$3,421,800,064		\$87,724,789
Sales Cont.	Scratch		\$1,356,430,792			\$1,352,977,384		\$3,453,408
Prize Exp. %	Scratch		72.1%			71.7%		0.5%

Texas Lottery Commission
Weekly Sales Summary
& Comparison to Previous Week
Unaudited

	Week Ending 5/21/2022	% of Sales	Week Ending 5/14/2022	% of Sales	\$ change	% change
	<u>THIS WEEK</u>		<u>LAST WEEK</u>			
Total Sales	<u>\$163,129,184</u>		<u>\$150,703,714</u>		<u>\$12,425,471</u>	8.2%
Scratch Tickets	<u>\$138,370,954</u>	84.8%	<u>\$126,717,376</u>	84.1%	<u>\$11,653,578</u>	9.2%
Lotto	\$2,497,887	1.5%	\$2,476,880	1.6%	\$21,007	0.8%
Lotto Extra	\$787,448	0.5%	\$782,354	0.5%	\$5,094	0.7%
Pick 3	\$5,374,836	3.3%	\$5,392,333	3.6%	-\$17,497	-0.3%
Pick 3 Fireball	\$530,195	0.3%	\$522,865	0.3%	\$7,331	1.4%
Cash Five	\$936,549	0.6%	\$942,441	0.6%	-\$5,892	-0.6%
Texas Two Step	\$902,590	0.6%	\$1,086,814	0.7%	-\$184,224	-17.0%
Mega Millions	\$3,699,968	2.3%	\$3,422,614	2.3%	\$277,354	8.1%
Megaplier	\$691,366	0.4%	\$648,404	0.4%	\$42,962	6.6%
MM Just the Jackpot	\$15,465	0.0%	\$14,778	0.0%	\$687	4.6%
Daily 4	\$2,640,191	1.6%	\$2,592,474	1.7%	\$47,717	1.8%
Daily 4 Fireball	\$528,000	0.3%	\$495,771	0.3%	\$32,229	6.5%
Powerball	\$4,400,614	2.7%	\$3,942,911	2.6%	\$457,703	11.6%
Power Play	\$859,706	0.5%	\$785,354	0.5%	\$74,352	9.5%
All or Nothing	\$893,416	0.5%	\$880,346	0.6%	\$13,070	1.5%
Total Draw Game Sales	<u>\$24,758,230</u>		<u>\$23,986,338</u>		<u>\$771,893</u>	3.2%

* Totals may not sum due to rounding.

Texas Lottery Commission
Weekly Sales Summary
Unaudited

SCRATCH TICKETS
TOP TEN SELLING GAMES

For the Week Ending: 5/21/2022

Rank	Price Point	Game	Sales (Millions)
1	\$ 100	\$20 MILLION SUPREME	\$ 18.326
2	\$ 10	MEGA LOTERIA	\$ 8.883
3	\$ 20	MILLION DOLLAR LOTERIA	\$ 7.317
4	\$ 50	500X LOTERIA SPECTACULAR	\$ 6.235
5	\$ 50	\$200,000,000 CASH BLOWOUT!	\$ 6.012
6	\$ 5	SUPER LOTERIA	\$ 5.138
7	\$ 30	PREMIER CASH	\$ 4.724
8	\$ 20	\$1,000,000 FRENZY	\$ 4.224
9	\$ 50	\$1,000,000 ULTIMATE	\$ 4.159
10	\$ 10	\$500,000 FRENZY	\$ 4.124

Texas Lottery Commission
Prize Payout Tracking Report
Unaudited

Through the Week Ending 5/21/2022

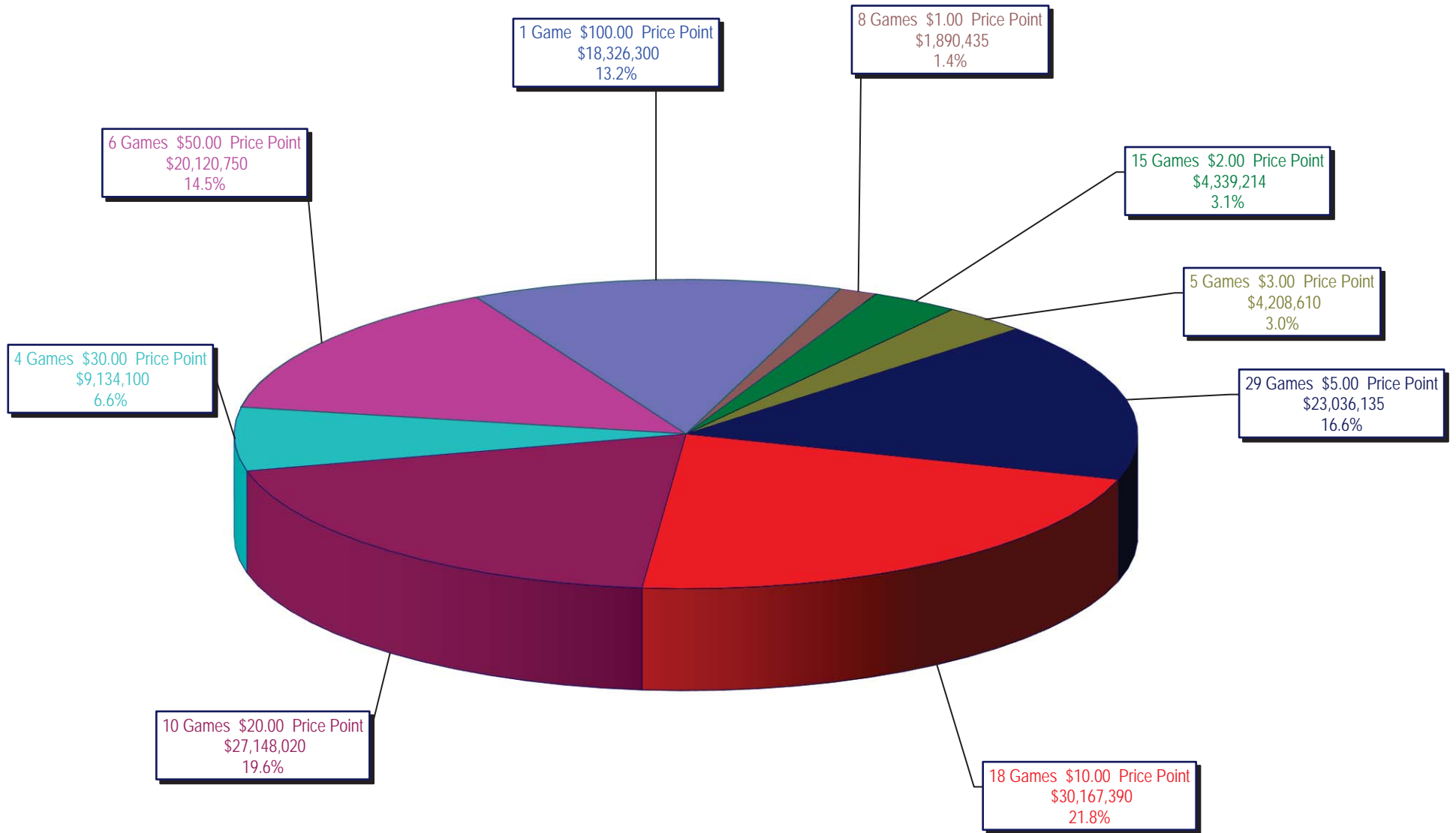
Draw Game Sales

		FY Sales Through the Week Ending 5/21/2022		FY Prize Expense Through the Week Ending 5/21/2022	Actual* Prize Payout	Base Payout (Prize Pool)
Lotto	\$	89,772,829	\$	49,068,616	54.66%	50.00%
Lotto Extra		28,439,964		15,348,654	53.97%	53.70%
Pick 3		197,817,136		96,812,110	48.94%	50.00%
Pick 3 Fireball		18,760,439		9,907,170	52.81%	54.00%
Cash Five		36,045,910		17,381,929	48.22%	50.97%
Texas Two Step		46,093,713		23,187,096	50.30%	50.00%
Mega Millions		150,577,356		76,036,921	50.50%	50.00%**
Megaplier		27,803,594		13,885,451	49.94%	N/A
MM Just the Jackpot		606,831		304,692	50.21%	50.00%**
Daily 4		87,766,598		44,504,300	50.71%	50.00%
Daily 4 Fireball		16,615,920		8,970,205	53.99%	54.22%
Powerball		267,685,035		135,419,152	50.59%	50.00%**
Power Play		47,980,134		24,158,460	50.35%	N/A
All or Nothing		32,042,712		17,446,008	54.45%	55.98%
Totals	\$	1,048,008,170	\$	532,430,764	50.80%	

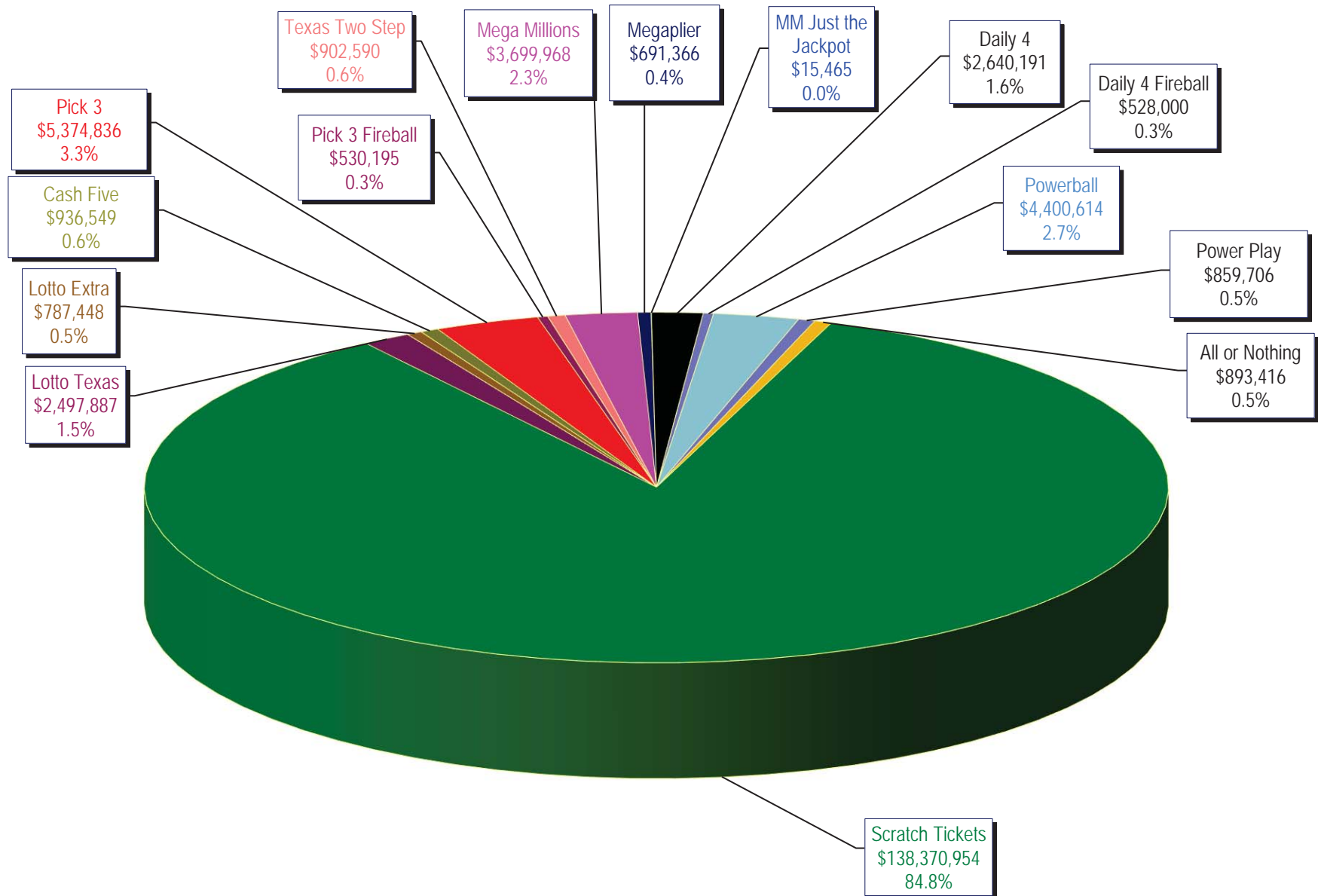
* Before Unclaimed Prizes

**Estimated; depends on # of guaranteed prizes won in Texas

Texas Lottery Commission
Scratch Ticket Sales
For the Week Ending 5/21/2022
(Unaudited)



Texas Lottery Commission
All Game Sales
For the Week Ending 5/21/2022
(Unaudited)



Week Ended	Scratch Tickets	New Games & Dates	Lotto Texas	Jackpot			Lotto Extra	Pick 3	Pick 3 Fireball	Cash Five	Texas Two Step	Jackpot		Mega Millions	Jackpot		MegaMillier	MM Just the Jackpot	Daily 4	Daily 4 Fireball	Powerball	Jackpot			Power Play	All or Nothing	Total	Per Cap.
				M	W	S						M	TH		T	F						M	W	S				
9/04/2021*	122,551,457	0	2,545,350	13.25	13.75	14.5	793,875	5,504,774	487,479	967,924	917,303	200	200	5,801,277	306	323	1,012,448	20,982	2,287,473	402,608	7,047,518	332	345	367	1,231,128	839,322	152,410,918	5.19
9/11/2021	117,404,128	2351 (\$1.N); 2352 (\$5.N); 2353 (\$10.N); 2354 (\$20.N) 09/07/2021	2,588,975	14.75	15.25	16.0	813,917	5,326,186	461,769	945,434	1,068,530	225	350	6,023,598	345	368	1,035,070	21,267	2,209,956	380,752	7,565,116	375	388	409	1,314,342	812,812	147,971,852	5.04
9/18/2021	121,522,543	0	2,867,148	16.25	16.75	17.0	889,630	5,253,330	466,681	952,821	1,589,517	525	675	6,932,804	383	405	1,163,829	25,323	2,207,513	387,515	8,964,496	416	432	457	1,531,841	811,896	155,566,886	5.30
9/25/2021	121,751,048	2355 (\$2.N); 2356 (\$10.N) 09/20/2021	2,855,413	17.5	18	18.75	885,506	5,085,184	445,038	943,820	1,269,968	950	200	5,253,062	432	20	923,281	19,479	2,135,889	364,426	10,798,775	472	490	523	1,818,847	819,560	155,369,295	5.29
10/2/2021	127,128,919	0	3,117,135	19.25	20	20.75	957,693	5,241,747	473,324	972,453	913,726	225	200	3,655,660	22	34	698,677	15,336	2,258,636	402,083	18,767,152	545	570	635	3,083,060	864,172	168,549,772	5.74
10/9/2021	121,062,687	2327 (\$3.N); 2379 (\$5.N); 2345 (\$20.N) 10/04/2021	2,335,573	5	5.25	5.5	725,359	5,235,510	476,311	965,788	1,094,254	225	350	3,600,594	45	60	679,198	16,839	2,221,288	403,702	11,443,024	685	20	31	1,946,343	850,392	153,956,861	5.24
10/16/2021	121,035,307	0	2,219,190	5.75	6	6.25	686,736	5,072,637	471,235	944,893	1,603,687	525	700	3,450,112	73	84	654,744	14,151	2,215,035	416,404	3,848,946	38	50	60	763,659	789,030	144,185,766	4.91
10/23/2021	121,223,886	2318 (\$2.N); 2342 (\$5.N); 2360 (\$5.N); 2344 (\$50.N) 10/18/2021; 2341 (\$5.N) 10/22/2021	2,194,577	6.5	6.75	7	678,396	5,005,838	468,781	938,938	2,062,303	925	1,225	3,633,956	94	108	678,107	14,133	2,226,214	462,326	4,047,814	65	73	86	788,330	781,256	145,204,834	4.95
10/30/2021	121,466,419	0	2,209,574	7.25	7.5	7.75	687,928	5,104,856	483,071	948,836	942,301	200	225	2,771,972	20	22	547,132	11,127	2,222,450	423,103	4,622,920	93	102	116	874,857	813,678	144,130,224	4.91
11/6/2021	123,385,510	2296 (\$1.N); 2361 (\$1.N); 2362 (\$3.N); 2363 (\$5.N); 2364 (\$10.N) 11/01/2021	2,289,094	8	8.25	8.5	711,717	5,188,859	481,994	958,458	1,009,534	350	200	2,824,532	26	36	557,329	11,643	2,271,135	428,925	4,914,166	123	132	146	917,962	812,480	146,763,338	5.00
11/13/2021	124,592,327	0	2,256,160	8.75	9	9.25	709,341	5,264,262	492,477	948,999	1,106,596	225	350	2,900,270	45	53	564,162	11,670	2,330,101	436,790	5,174,870	151	160	173	957,703	810,690	148,556,417	5.06
11/20/2021	129,630,920	2365 (\$2.N); 2319 (\$5.N); 2367 (\$20.N) - 11/15/2021	2,275,632	9.5	9.75	10	719,007	5,152,620	480,979	944,831	1,072,005	500	200	2,985,733	63	74	578,414	11,802	2,260,887	425,131	5,469,506	180	190	205	1,000,526	812,614	153,820,606	5.24
11/27/2021	121,428,296	0	2,315,143	10.25	10.5	10.75	733,873	5,080,475	475,740	901,730	826,530	225	200	3,038,216	83	94	582,969	12,180	2,203,736	408,793	5,818,680	213	224	243	1,058,800	771,536	145,656,697	4.96
12/4/2021	128,910,581	0	2,424,732	11	11.25	11.5	762,264	5,341,636	499,490	962,393	1,074,871	225	325	3,497,316	102	112	659,456	13,872	2,306,129	433,273	6,255,300	253	264	278	1,117,683	808,866	155,067,861	5.28
12/11/2021	127,275,950	2368 (\$5.N); 2348 (\$10.N) - 12/06/2021	2,393,662	11.75	12	12.25	753,303	5,312,512	489,077	948,758	1,399,506	475	675	3,639,196	122	135	676,627	13,716	2,343,742	442,865	6,671,809	280	291	307	1,176,730	793,522	154,330,974	5.26
12/18/2021	130,658,440	2325 (\$2.N) - 12/13/2021	2,482,012	12.5	12.75	13	784,326	5,348,219	501,639	952,783	927,190	200	225	3,864,014	148	160	710,693	14,961	2,383,879	451,431	7,550,738	320	333	353	1,324,101	827,770	158,782,195	5.41
12/25/2021	134,332,326	2370 (\$2.N); 2371 (\$5.N); 2333 (\$10.N); 2358 (\$50.N) - 12/20/2021	2,583,398	13.5	13.75	14.5	805,304	5,402,469	501,636	936,787	976,240	350	200	4,457,468	171	187	804,477	16,350	2,425,508	456,989	9,146,610	363	378	400	1,553,369	820,798	165,219,728	5.63
1/1/2022	143,781,256	0	3,054,907	14.75	15.25	16.25	974,062	5,334,260	499,340	1,003,119	1,144,524	225	325	6,515,372	201	221	1,146,055	23,649	2,390,436	447,102	19,340,444	416	441	500	3,301,587	883,078	189,839,189	6.47
1/8/2022	134,458,569	2372 (\$1.N); 2373 (\$3.N); 2374 (\$5.N); 2375 (\$10.N); 2376 (\$20.N) - 1/03/2022	2,476,871	5	5.25	5.5	798,851	5,172,993	503,883	990,527	1,075,811	500	200	6,901,130	253	278	1,202,491	27,456	2,268,367	422,369	21,414,615	540	630	20	3,520,244	932,784	182,166,961	6.20
1/15/2022	130,854,390	0	2,196,004	5.75	6	6.25	702,521	5,107,174	502,808	955,737	1,076,537	225	350	6,478,770	300	325	1,126,796	24,975	2,263,004	419,158	4,182,481	27	38	48	822,664	846,372	157,559,390	5.37
1/22/2022	126,399,631	2329 (\$2.N); 2419 (\$2.N) - 1/17/2022	2,180,868	6.5	6.75	7	698,313	4,939,272	480,505	941,764	1,434,838	500	700	6,678,880	347	376	1,131,194	26,382	2,227,928	425,710	4,224,578	53	62	76	825,369	840,620	153,455,852	5.23
1/29/2022	127,324,026	0	2,250,549	7.25	7.5	7.75	722,235	4,900,414	479,094	950,541	866,017	200	200	7,372,728	396	421	1,245,069	27,174	2,212,199	410,678	4,843,833	82	91	104	893,863	860,396	155,158,815	5.28
2/5/2022	126,528,959	0	2,324,504	8	8.25	8.5	740,763	4,968,856	481,679	944,144	844,400	225	200	2,980,621	20	22	586,342	12,669	2,222,117	420,517	5,162,000	113	123	137	979,558	849,878	150,047,006	5.11
2/12/2022	132,565,722	2357 (\$5.N); 2433 (\$10.N); 2380 (\$10.N) - 2/07/2022	2,356,602	8.75	9	9.25	752,595	5,121,998	489,692	980,831	1,102,238	225	325	3,071,760	31	42	609,297	13,719	2,249,589	415,305	5,522,624	147	158	172	1,038,452	865,856	157,156,280	5.35

