



INTEROFFICE MEMO

Ryan Mindell, Executive Director

LaDonna Castañuela, Charitable Bingo Operations Director

To: Robert Rivera, Chairman
Cindy Fields, Commissioner
Mark A. Franz, Commissioner
Clark E. Smith, Commissioner
Jamey Steen, Commissioner

Thru: Sergio Rey, Chief Financial Officer

A handwritten signature in blue ink, appearing to read "Sergio Rey", is written over the name of the Chief Financial Officer.

Date: January 23, 2025

Re: Lottery Sales and Revenue Summary

Attached is the detailed weekly sales summary for the week ending January 18, 2025.

Summary sales performance memos and the detailed weekly sales summary for the week ending February 1, 2025 will be provided at the February 6th meeting.

If you have questions or need additional information, please contact me at 512-344-5426.



WEEKLY SALES SUMMARY

Unaudited

Week Ending: 1/18/2025

Texas Lottery Commission
Fiscal Year to Date Sales Comparison
Unaudited

Through the Week Ending: 1/18/2025 (20 Weeks)

Sales by Game	FY 2023*	FY 2024**	FY 2025	\$ Change		% Change	
				FY 2025 to FY 2023	FY 2025 to FY 2024	FY 2025 to FY 2023	FY 2025 to FY 2024
Scratch Tickets	\$ 2,595,617,690	\$ 2,513,675,934	\$ 2,531,845,885	\$ -63,771,805	\$ 18,169,951	-2.5%	0.7%
Lotto Texas	56,057,984	56,104,307	69,279,957	13,221,973	13,175,650	23.6%	23.5%
Lotto Extra	18,555,964	19,749,671	23,835,277	5,279,313	4,085,606	28.5%	20.7%
Pick 3	102,491,683	102,152,336	100,391,865	-2,099,818	-1,760,471	-2.0%	-1.7%
Pick 3 Fireball	10,166,495	10,890,137	11,746,531	1,580,037	856,395	15.5%	7.9%
Cash Five	19,722,270	20,100,267	19,002,058	-720,212	-1,098,209	-3.7%	-5.5%
Texas Two Step	24,327,369	24,199,506	25,869,479	1,542,110	1,669,973	6.3%	6.9%
Mega Millions	198,063,136	94,073,324	156,940,285	-41,122,851	62,866,961	-20.8%	66.8%
Megaplier	35,806,683	19,119,162	30,774,491	-5,032,192	11,655,329	-14.1%	61.0%
MM Just the Jackpot	669,321	300,392	464,568	-204,753	164,176	-30.6%	54.7%
Daily 4	47,874,130	48,522,274	49,201,335	1,327,205	679,061	2.8%	1.4%
Daily 4 Fireball	9,227,535	10,156,936	10,611,119	1,383,584	454,183	15.0%	4.5%
Powerball	272,821,968	241,985,918	106,888,892	-165,933,076	-135,097,026	-60.8%	-55.8%
Power Play	49,304,216	46,188,370	22,506,118	-26,798,098	-23,682,252	-54.4%	-51.3%
All or Nothing	19,915,541	20,642,935	18,854,351	-1,061,190	-1,788,584	-5.3%	-8.7%
Total	\$ 3,460,621,984	\$ 3,227,861,468	\$ 3,178,212,210	\$ -282,409,774	\$ -49,649,258	-8.2%	-1.5%

*3 extra days

**2 extra days

Texas Lottery Commission
Fiscal Year to Date Cumulative Average Sales Comparison
 Unaudited

Through the Week Ending 1/18/2025

Sales by Game	FY 2023		FY 2024		FY 2025
Scratch Tickets	\$	18,151,173	\$	17,701,943	\$ 18,084,613
Lotto Texas		392,014		395,101	494,857
Lotto Extra		129,762		139,082	170,252
Pick 3		716,725		719,383	717,085
Pick 3 Fireball		71,094		76,691	83,904
Cash Five		137,918		141,551	135,729
Texas Two Step		170,121		170,419	184,782
Mega Millions		1,385,057		662,488	1,121,002
Megaplier		250,396		134,642	219,818
MM Just the Jackpot		4,681		2,115	3,318
Daily 4		334,784		341,706	351,438
Daily 4 Fireball		64,528		71,528	75,794
Powerball		1,907,846		1,704,126	763,492
Power Play		344,785		325,270	160,758
All or Nothing		139,270		145,373	134,674
Total	\$	24,200,154	\$	22,731,419	\$ 22,701,516

1/21/2023
143 days

1/20/2024
142 days

1/18/2025
140 days

Texas Lottery Commission
Fiscal Year Over Year Change in Sales
Unaudited
FY 2025 Compared to FY 2024

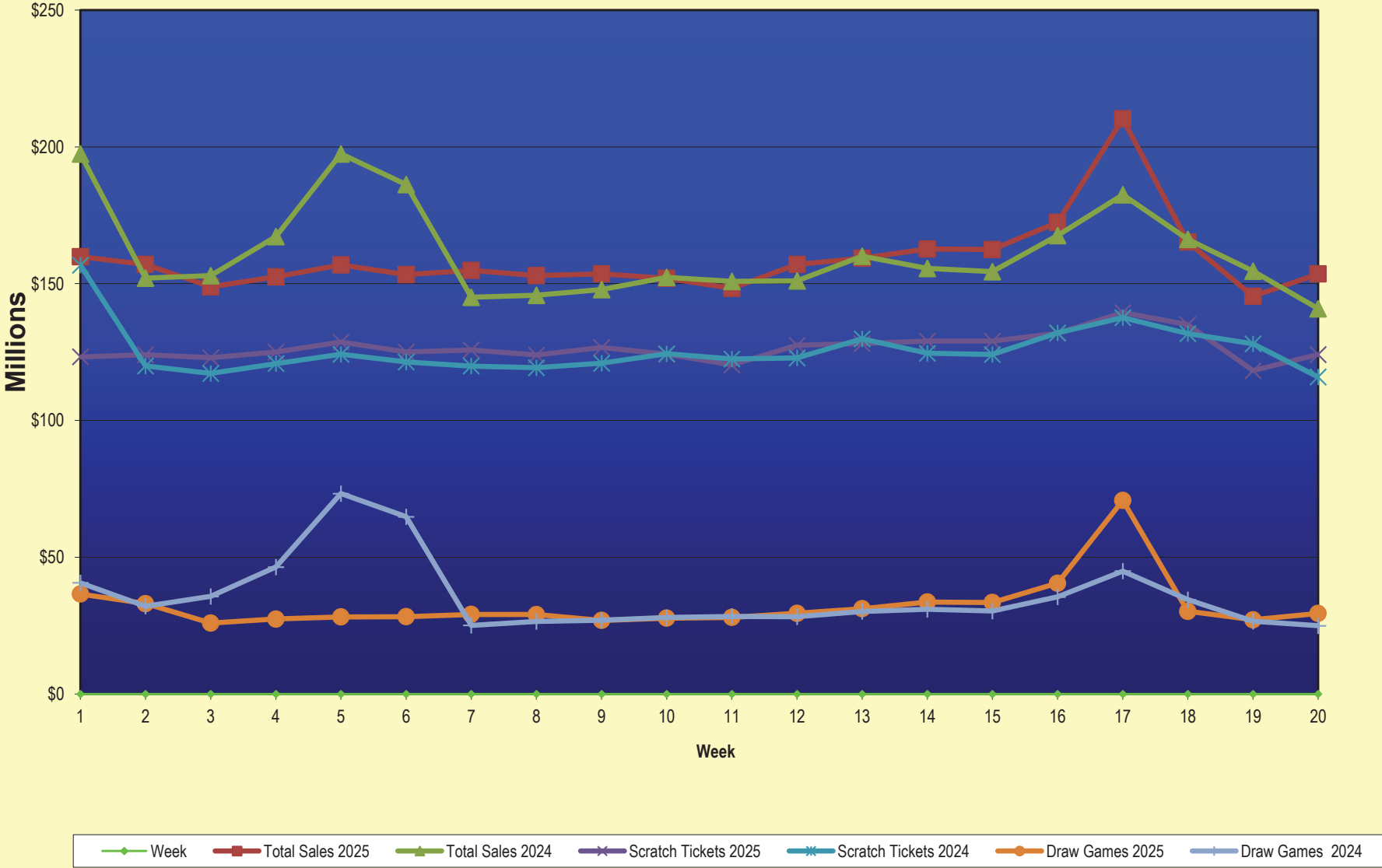
			SCRATCH TICKETS				DRAW GAMES				TOTAL SALES			
FY 2025			FY 2025	FY 2024	Difference	% change - Cumulative Sales	FY 2025	FY 2024	Difference	% change - Cumulative Sales	FY 2025	FY 2024	Difference	% change - Cumulative Sales
Week	Week	Ending												
0	9/2/2023*		\$0	\$38,978,519	(\$38,978,519)	-100.0%	\$0	\$10,637,832	(\$10,637,832)	-100.0%	\$0	\$49,616,351	(\$49,616,351)	-100.0%
1	9/7/2024		\$123,243,994	\$117,746,228	\$5,497,766	4.7%	\$36,580,304	\$30,027,540	\$6,552,765	21.8%	\$159,824,298	\$147,773,768	\$12,050,531	8.2%
2	9/14/2024		\$124,003,613	\$119,921,752	\$4,081,861	3.4%	\$33,053,733	\$32,110,344	\$943,390	2.9%	\$157,057,346	\$152,032,096	\$5,025,251	3.3%
3	9/21/2024		\$122,908,642	\$117,226,710	\$5,681,932	4.8%	\$25,947,843	\$35,718,110	(\$9,770,268)	-27.4%	\$148,856,485	\$152,944,820	(\$4,088,336)	-2.7%
4	9/28/2024		\$125,035,263	\$120,793,331	\$4,241,932	3.5%	\$27,430,947	\$46,419,217	(\$18,988,270)	-40.9%	\$152,466,210	\$167,212,548	(\$14,746,338)	-8.8%
5	10/5/2024		\$128,633,679	\$124,167,291	\$4,466,388	3.6%	\$28,187,321	\$73,290,479	(\$45,103,158)	-61.5%	\$156,821,000	\$197,457,770	(\$40,636,770)	-20.6%
6	10/12/2024		\$125,028,989	\$121,390,056	\$3,638,933	3.0%	\$28,286,612	\$64,809,497	(\$36,522,886)	-56.4%	\$153,315,601	\$186,199,553	(\$32,883,953)	-17.7%
7	10/19/2024		\$125,779,402	\$119,876,918	\$5,902,484	4.9%	\$29,102,741	\$25,121,369	\$3,981,372	15.8%	\$154,882,143	\$144,998,287	\$9,883,856	6.8%
8	10/26/2024		\$123,891,926	\$119,251,289	\$4,640,637	3.9%	\$29,078,529	\$26,497,085	\$2,581,444	9.7%	\$152,970,455	\$145,748,374	\$7,222,081	5.0%
9	11/2/2024		\$126,641,903	\$120,899,631	\$5,742,272	4.7%	\$26,910,117	\$26,966,850	(\$56,733)	-0.2%	\$153,552,020	\$147,866,481	\$5,685,539	3.8%
10	11/9/2024		\$124,170,230	\$124,357,490	(\$187,260)	-0.2%	\$27,752,989	\$27,951,994	(\$199,005)	-0.7%	\$151,923,219	\$152,309,484	(\$386,265)	-0.3%
11	11/16/2024		\$120,282,442	\$122,472,423	(\$2,189,981)	-1.8%	\$28,004,665	\$28,397,507	(\$392,842)	-1.4%	\$148,287,107	\$150,869,930	(\$2,582,823)	-1.7%
12	11/23/2024		\$127,481,870	\$122,802,742	\$4,679,128	3.8%	\$29,527,842	\$28,252,450	\$1,275,393	4.5%	\$157,009,712	\$151,055,192	\$5,954,521	3.9%
13	11/30/2024		\$128,114,304	\$129,836,541	(\$1,722,237)	-1.3%	\$31,208,493	\$30,176,458	\$1,032,035	3.4%	\$159,322,797	\$160,012,999	(\$690,202)	-0.4%
14	12/7/2024		\$129,005,761	\$124,603,445	\$4,402,316	3.5%	\$33,641,998	\$30,970,299	\$2,671,699	8.6%	\$162,647,759	\$155,573,744	\$7,074,015	4.5%
15	12/14/2024		\$129,032,767	\$124,125,352	\$4,907,415	4.0%	\$33,473,828	\$30,309,108	\$3,164,720	10.4%	\$162,506,595	\$154,434,460	\$8,072,135	5.2%
16	12/21/2024		\$131,834,163	\$132,017,161	(\$182,998)	-0.1%	\$40,534,870	\$35,542,727	\$4,992,143	14.0%	\$172,369,033	\$167,559,888	\$4,809,145	2.9%
17	12/28/2024		\$139,436,332	\$137,579,889	\$1,856,443	1.3%	\$70,775,883	\$44,917,574	\$25,858,309	57.6%	\$210,212,215	\$182,497,463	\$27,714,752	15.2%
18	1/4/2025		\$135,002,745	\$131,759,760	\$3,242,985	2.5%	\$30,242,143	\$34,501,857	(\$4,259,715)	-12.3%	\$165,244,888	\$166,261,617	(\$1,016,730)	-0.6%
19	1/11/2025		\$118,235,676	\$127,983,080	(\$9,747,404)	-7.6%	\$27,173,028	\$26,580,291	\$592,737	2.2%	\$145,408,704	\$154,563,371	(\$9,154,668)	-5.9%
20	1/18/2025		\$124,082,184	\$115,886,326	\$8,195,858	7.1%	\$29,452,444	\$24,986,950	\$4,465,494	17.9%	\$153,534,628	\$140,873,276	\$12,661,352	9.0%
21	1/25/2025			\$123,239,175				\$26,358,979				\$149,598,154		
22	2/1/2025			\$129,552,953				\$28,985,243				\$158,538,196		
23	2/8/2025			\$133,732,466				\$29,421,493				\$163,153,959		
24	2/15/2025			\$132,311,579				\$29,986,701				\$162,298,280		
25	2/22/2025			\$132,789,940				\$32,053,481				\$164,843,421		
26	3/1/2025			\$140,014,976				\$36,048,898				\$176,063,874		
27	3/8/2025			\$139,381,071				\$37,865,362				\$177,246,433		
28	3/15/2025			\$135,122,488				\$41,791,634				\$176,914,122		
29	3/22/2025			\$137,726,063				\$57,194,799				\$194,920,862		
30	3/29/2025			\$141,104,504				\$59,818,632				\$200,923,136		
31	4/5/2025			\$137,394,802				\$66,283,915				\$203,678,717		
32	4/12/2025			\$134,916,822				\$26,874,892				\$161,791,714		
33	4/19/2025			\$133,976,232				\$27,066,736				\$161,042,968		
34	4/26/2025			\$134,565,327				\$27,901,309				\$162,466,636		
35	5/3/2025			\$137,482,260				\$29,412,500				\$166,894,760		
36	5/10/2025			\$131,053,687				\$29,057,528				\$160,111,215		
37	5/17/2025			\$131,034,564				\$27,768,764				\$158,803,328		
38	5/24/2025			\$128,284,725				\$28,642,753				\$156,927,478		
39	5/31/2025			\$126,138,448				\$29,657,921				\$155,796,369		
40	6/7/2025			\$126,987,877				\$29,332,010				\$156,319,887		
41	6/14/2025			\$123,804,834				\$25,353,870				\$149,158,704		

Texas Lottery Commission
Fiscal Year Over Year Change in Sales
Unaudited
FY 2025 Compared to FY 2024

			SCRATCH TICKETS				DRAW GAMES				TOTAL SALES			
FY 2025			FY 2025	FY 2024	Difference	% change - Cumulative Sales	FY 2025	FY 2024	Difference	% change - Cumulative Sales	FY 2025	FY 2024	Difference	% change - Cumulative Sales
Week	Week	Ending												
42	6/21/2025			\$125,135,883				\$25,488,767				\$150,624,650		
43	6/28/2025			\$123,029,523				\$25,603,583				\$148,633,106		
44	7/5/2025			\$125,938,835				\$25,738,723				\$151,677,558		
45	7/12/2025			\$113,657,940				\$23,579,294				\$137,237,234		
46	7/19/2025			\$121,165,975				\$26,962,145				\$148,128,120		
47	7/26/2025			\$122,156,010				\$26,553,351				\$148,709,361		
48	8/2/2025			\$124,202,395				\$27,927,542				\$152,129,937		
49	8/9/2025			\$119,923,316				\$28,787,098				\$148,710,414		
50	8/16/2025			\$123,769,379				\$29,366,395				\$153,135,774		
51	8/23/2025			\$116,518,769				\$30,891,272				\$147,410,041		
52	8/30/2025			\$124,705,011				\$33,323,753				\$158,028,764		
	8/31/2025**			\$0				\$0				\$0		
Total thru Current Week			\$2,531,845,885	\$2,513,675,934	\$18,169,951	0.7%	\$646,366,325	\$714,185,534	(\$67,819,209)	-9.5%	\$3,178,212,210	\$3,227,861,468	(\$49,649,258)	-1.5%
Fiscal Year Total			\$2,531,845,885	\$6,644,493,763			\$646,366,325	\$1,745,284,869			\$3,178,212,210	\$8,389,778,632		

* FY 24 includes 2 days
** FY 25 includes 1 day

Texas Lottery Commission
Fiscal Year Over Year Change in Sales



Note: Report is prepared on a Fiscal Year basis.

Texas Lottery Commission
Scratch Tickets by Price Point
Sales, Prize Expense, Sales Contribution and Payout Percentage With Year Over Year Changes
Unaudited

Fiscal Year	Price Point	# of Active Games	FY Sales	% of Scratch Ticket Sales	Year over Year Change in Sales	FY Prize Expense	Year over Year Change in Prize Expense	FY Sales Contribution	Year over Year Change in Contribution	Average Prize Payout %	Year over Year Difference in Payout %
2024	\$1.00	10	29,370,598	1.2%		17,855,653		11,514,945		60.8%	0.1%
Through	\$2.00	15	64,527,812	2.6%		42,634,623		21,893,189		66.1%	0.7%
1/20/2024	\$3.00	6	72,159,489	2.9%		47,552,805		24,606,684		65.9%	-0.1%
	\$5.00	44	454,889,635	18.1%		309,340,867		145,548,768		68.0%	0.0%
	\$10.00	25	566,037,630	22.5%		396,978,111		169,059,519		70.1%	0.1%
	\$20.00	20	588,888,000	23.4%		441,738,796		147,149,204		75.0%	0.0%
	\$30.00	4	148,147,620	5.9%		111,177,916		36,969,704		75.0%	0.0%
	\$50.00	8	367,281,650	14.6%		286,542,607		80,739,043		78.0%	0.0%
	\$100.00	2	222,373,500	8.8%		177,796,577		44,576,923		80.0%	0.1%
Total		134	\$2,513,675,934			\$1,831,617,954		\$682,057,980		72.9%	0.4%
2025	\$1.00	9	23,334,051	0.4%		14,239,075		9,094,976		61.0%	0.2%
Through	\$2.00	17	62,410,166	0.9%		40,671,826		21,738,340		65.2%	-0.9%
1/18/2025	\$3.00	9	66,335,403	1.0%		43,815,536		22,519,867		66.1%	0.2%
	\$5.00	42	416,794,395	6.3%		283,417,374		133,377,021		68.0%	0.0%
	\$10.00	26	574,187,670	8.6%		402,380,630		171,807,040		70.1%	-0.1%
	\$20.00	22	595,066,140	9.0%		446,281,963		148,784,177		75.0%	0.0%
	\$30.00	7	145,316,310	2.2%		109,004,452		36,311,858		75.0%	0.0%
	\$50.00	10	399,711,250	6.0%		311,925,627		87,785,623		78.0%	0.0%
	\$100.00	3	248,690,500	3.7%		198,863,881		49,826,619		80.0%	0.0%
Total		145	\$2,531,845,885			\$1,850,600,362		\$681,245,523		73.1%	0.2%
Variance	\$1.00	-1	-6,036,547		-20.6%	-3,616,578	-20.3%	-2,419,969	-21.0%	0.23%	
2025 to	\$2.00	2	-2,117,646		-3.3%	-1,962,797	-4.6%	-154,849	-0.7%	-0.90%	
2024	\$3.00	3	-5,824,086		-8.1%	-3,737,269	-7.9%	-2,086,817	-8.5%	0.15%	
	\$5.00	-2	-38,095,240		-8.4%	-25,923,493	-8.4%	-12,171,747	-8.4%	0.00%	
	\$10.00	1	8,150,040		1.4%	5,402,519	1.4%	2,747,521	1.6%	-0.05%	
	\$20.00	2	6,178,140		1.0%	4,543,167	1.0%	1,634,973	1.1%	-0.02%	
	\$30.00	3	-2,831,310		-1.9%	-2,173,464	-2.0%	-657,846	-1.8%	-0.03%	
	\$50.00	2	32,429,600		8.8%	25,383,020	8.9%	7,046,580	8.7%	0.02%	
	\$100.00	1	26,317,000		11.8%	21,067,303	11.8%	5,249,697	11.8%	0.01%	
Total		11	\$18,169,951		0.7%	\$18,982,408	1.0%	-\$812,457	-0.1%	0.23%	

Notes - Scratch Ticket Variances

Texas Lottery Commission
Scratch Tickets by Price Point
Sales, Prize Expense, Sales Contribution and Payout Percentage With Year Over Year Changes
Unaudited

			FY 2025			FY 2024		Difference
Sales	\$1 - \$5		\$568,874,015			\$620,947,534		-\$52,073,519
Prize Exp.	\$1 - \$5		\$382,143,810			\$417,383,947		-\$35,240,137
Sales Cont.	\$1 - \$5		\$186,730,205			\$203,563,587		-\$16,833,382
Prize Exp. %	\$1 - \$5		67.2%			67.2%		0.0%
			FY 2025			FY 2024		Difference
Sales	\$10 - \$100		\$1,962,971,870			\$1,892,728,400		\$70,243,470
Prize Exp.	\$10 - \$100		\$1,468,456,552			\$1,414,234,007		\$54,222,545
Sales Cont.	\$10 - \$100		\$494,515,318			\$478,494,393		\$16,020,925
Prize Exp. %	\$10 - \$100		74.8%			74.7%		0.1%
			FY 2025			FY 2024		Difference
Sales	Scratch		\$2,531,845,885			\$2,513,675,934		\$18,169,951
Prize Exp.	Scratch		\$1,850,600,362			\$1,831,617,954		\$18,982,408
Sales Cont.	Scratch		\$681,245,523			\$682,057,980		-\$812,457
Prize Exp. %	Scratch		73.1%			72.9%		0.2%

			FY 2025			FY 2024		Difference
Sales	\$1 - \$10		\$1,143,061,685			\$1,186,985,164		-\$43,923,479
Prize Exp.	\$1 - \$10		\$784,524,440			\$814,362,058		-\$29,837,618
Sales Cont.	\$1 - \$10		\$358,537,245			\$372,623,106		-\$14,085,861
Prize Exp. %	\$1 - \$10		68.6%			68.6%		0.0%
			FY 2025			FY 2024		Difference
Sales	\$20 - \$100		\$1,388,784,200			\$1,326,690,770		\$62,093,430
Prize Exp.	\$20 - \$100		\$1,066,075,922			\$1,017,255,896		\$48,820,026
Sales Cont.	\$20 - \$100		\$322,708,278			\$309,434,874		\$13,273,404
Prize Exp. %	\$20 - \$100		76.8%			76.7%		0.1%
			FY 2025			FY 2024		Difference
Sales	Scratch		\$2,531,845,885			\$2,513,675,934		\$18,169,951
Prize Exp.	Scratch		\$1,850,600,362			\$1,831,617,954		\$18,982,408
Sales Cont.	Scratch		\$681,245,523			\$682,057,980		-\$812,457
Prize Exp. %	Scratch		73.1%			72.9%		0.2%

**Texas Lottery Commission
Weekly Sales Summary
& Comparison to Previous Week
Unaudited**

	Week Ending 1/18/2025	% of Sales	Week Ending 1/11/2025	% of Sales	\$ change	% change
	<u>THIS WEEK</u>		<u>LAST WEEK</u>			
Total Sales	<u>\$153,534,628</u>		<u>\$145,408,704</u>		<u>\$8,125,925</u>	5.6%
Scratch Tickets	<u>\$124,082,184</u>	80.8%	<u>\$118,235,676</u>	81.3%	<u>\$5,846,508</u>	4.9%
Lotto	\$4,305,714	2.8%	\$4,168,929	2.9%	\$136,785	3.3%
Lotto Extra	\$1,457,234	0.9%	\$1,413,701	1.0%	\$43,533	3.1%
Pick 3	\$5,105,309	3.3%	\$4,800,020	3.3%	\$305,289	6.4%
Pick 3 Fireball	\$620,710	0.4%	\$575,048	0.4%	\$45,662	7.9%
Cash Five	\$953,582	0.6%	\$923,323	0.6%	\$30,259	3.3%
Texas Two Step	\$1,035,365	0.7%	\$917,157	0.6%	\$118,208	12.9%
Mega Millions	\$3,602,974	2.3%	\$3,197,666	2.2%	\$405,308	12.7%
Megaplier	\$781,985	0.5%	\$701,391	0.5%	\$80,594	11.5%
MM Just the Jackpot	\$11,607	0.0%	\$11,691	0.0%	-\$84	-0.7%
Daily 4	\$2,444,477	1.6%	\$2,287,613	1.6%	\$156,864	6.9%
Daily 4 Fireball	\$526,324	0.3%	\$510,197	0.4%	\$16,127	3.2%
Powerball	\$6,329,556	4.1%	\$5,584,434	3.8%	\$745,122	13.3%
Power Play	\$1,305,668	0.9%	\$1,166,298	0.8%	\$139,370	11.9%
All or Nothing	\$971,940	0.6%	\$915,560	0.6%	\$56,380	6.2%
Total Draw Game Sales	<u>\$29,452,444</u>		<u>\$27,173,028</u>		<u>\$2,279,417</u>	8.4%

* Totals may not sum due to rounding.

Texas Lottery Commission
Weekly Sales Summary
Unaudited

SCRATCH TICKETS
TOP TEN SELLING GAMES

For the Week Ending: 1/18/2025

Rank	Price Point	Game	Sales (Millions)
1	\$ 20	MILLION DOLLAR LOTERIA	\$ 5.957
2	\$ 100	\$400 MILLION MEGA BUCKS	\$ 5.132
3	\$ 100	LOTERIA SUPREME	\$ 4.764
4	\$ 5	SUPER LOTERIA	\$ 4.743
5	\$ 10	LIMITED EDITION MEGA LOTERIA	\$ 4.703
6	\$ 50	500X	\$ 4.506
7	\$ 10	MEGA LOTERIA	\$ 4.344
8	\$ 50	COLOSSAL CASHWORD	\$ 4.329
9	\$ 20	\$1,000,000 CROSSWORD	\$ 4.328
10	\$ 50	500X LOTERIA SPECTACULAR	\$ 4.127

**Texas Lottery Commission
Prize Payout Tracking Report
Unaudited**

Through Week Ending 1/18/2025

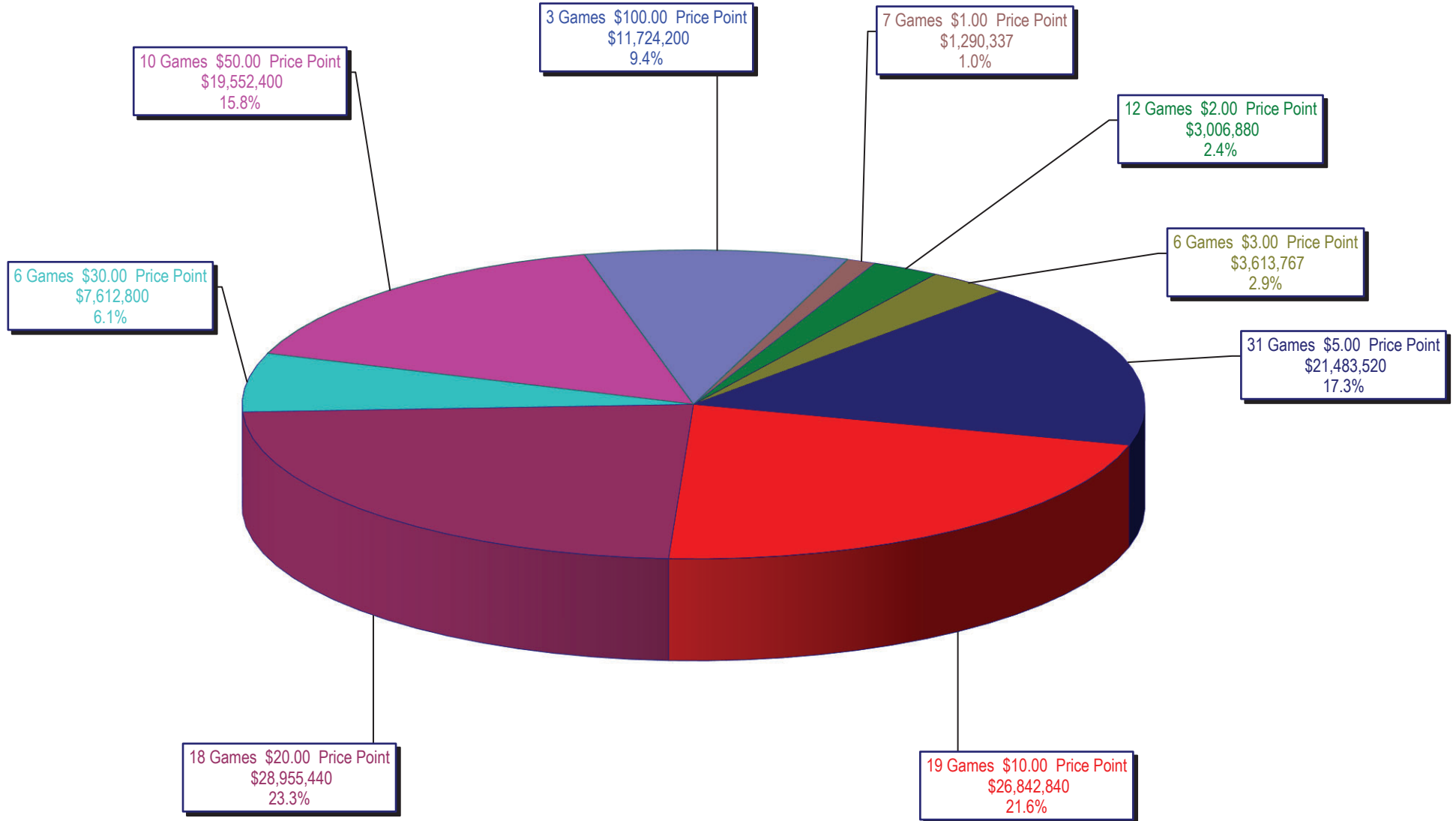
Draw Game Sales

	FY Sales	FY Prize Expense	Actual*	Base Payout
	Through Week Ending	Through Week Ending	Prize Payout	(Prize Pool)
	1/18/2025	1/18/2025		
Lotto	\$ 69,279,957	\$ 34,809,138	50.24%	50.00%
Lotto Extra	23,835,277	12,945,582	54.31%	53.70%
Pick 3	100,391,865	47,796,270	47.61%	50.00%
Pick 3 Fireball	11,746,531	6,583,515	56.05%	54.00%
Cash Five	19,002,058	9,390,274	49.42%	50.97%
Texas Two Step	25,869,479	12,934,612	50.00%	50.00%
Mega Millions	156,940,285	80,081,806	51.03%	50.00%**
Megaplier	30,774,491	15,451,754	50.21%	N/A
MM Just the Jackpot	464,568	235,478	50.69%	50.00%**
Daily 4	49,201,335	28,790,625	58.52%	50.00%
Daily 4 Fireball	10,611,119	5,109,850	48.16%	54.22%
Powerball	106,888,892	53,672,935	50.21%	50.00%**
Power Play	22,506,118	11,294,337	50.18%	N/A
All or Nothing	18,854,351	11,768,050	62.42%	55.98%
Totals	\$ 646,366,325	\$ 330,864,227	51.19%	

** Before Unclaimed Prizes*

***Estimated; depends on # of guaranteed prizes won in Texas*

Texas Lottery Commission
Scratch Ticket Sales
For the Week Ending 1/18/2025
(Unaudited)



Texas Lottery Commission
All Game Sales
For the Week Ending 1/18/2025
(Unaudited)

